

# VITANOVA

HEDGE FUND

## SPRING PROMOTION

March 2020

www.vitanovahedgefund.com

### March 2020 Fund Performance as at valuation date 27th February 2020

Share Class	Start Date	Share Price	1 Month	3 Months	6 Months	12 Months	Annualised	Since Launch
USD Arbitrage Class	01/08/2014	249.7537	0.83%	2.20%	4.86%	12.94%	26.82%	149.75%
EUR Arbitrage Class	01/03/2019	110.8370	0.82%	2.17%	4.78%		11.82%	10.84%
CHF Arbitrage Class	01/03/2019	112.6523	0.81%	2.16%	4.81%		12.65%	12.65%
GBP Arbitrage Class	01/03/2019	100.0000						

We are pleased to announce a Spring Promotion for all new investments placed into Vita Nova Hedge Fund as follows:

**3%** Extra From  
1<sup>st</sup> March to  
31<sup>st</sup> March

**2%** Extra From  
1<sup>st</sup> April to  
30<sup>th</sup> April

**1%** Extra From  
1<sup>st</sup> May to  
31<sup>st</sup> May

**This Promotion is only available in March, April and May**

The extra allocation may be taken in whole or in part as a placement fee or used to enhance investment value

The Promotion comes at a time when equity markets are enduring pricing pressure as a result of the expectations of an economic downturn brought about by Corona Virus. Vita Nova is in a defensive position at present and has no equity exposure other than a small percentage invested in private equity positions.

Launched in 2014, Vita Nova Hedge Fund aims to achieve long term capital growth by identifying short to medium term investment opportunities with inherent pricing weaknesses and the potential to improve over time. The investment management team may rely on economic forecasts and analysis in respect of interest rate trends, macroeconomic developments, global imbalances, business cycles and other broad systemic factors that may lead to arbitrage and alpha opportunities.

All eligible subscriptions must be accepted by the fund administrator and cleared funds received in advance of the relevant dealing day to qualify.

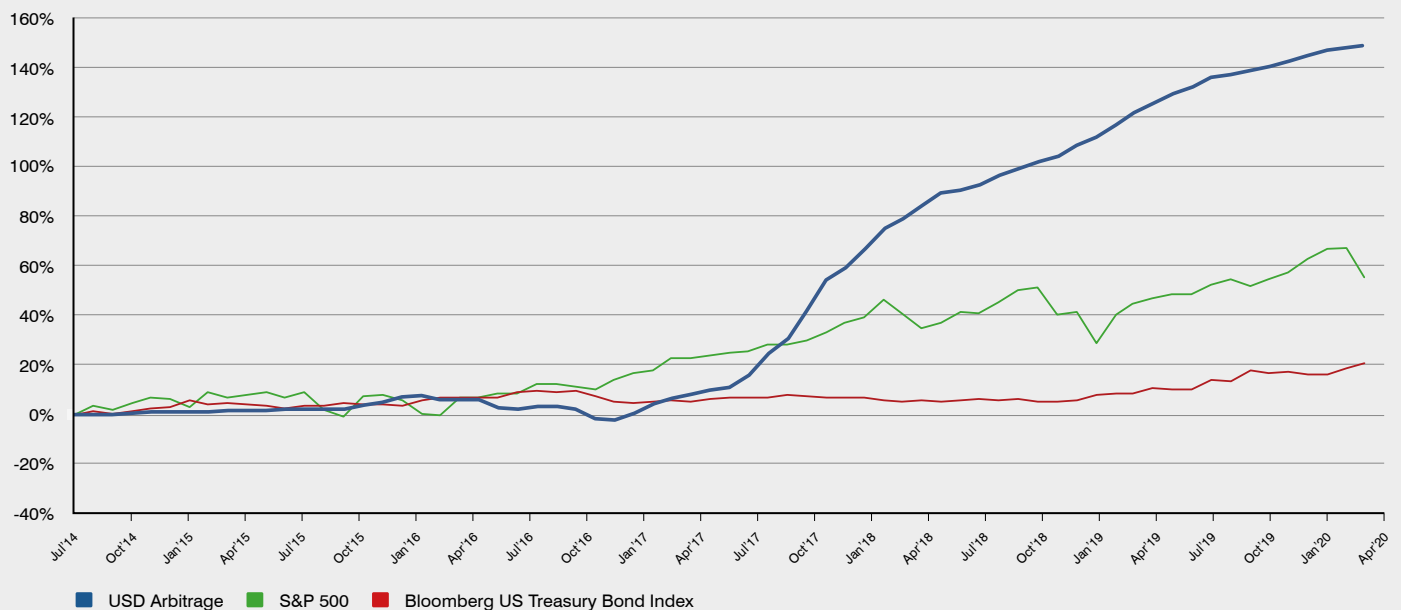
### Key Features

<b>Fund Type:</b>	Open Ended Mutual Fund
<b>Manager:</b>	Managing Partners Investment Management Limited (the "Manager")
<b>Fund Launch Date:</b>	August 2014
<b>Share Classes:</b>	USD, CHF, EUR and GBP Arbitrage
<b>Valuation Frequency:</b>	Monthly
<b>Minimum Subscription:</b>	USD100,000 or currency equivalent
<b>Initial Charge:</b>	Nil - 100% Allocation
<b>Dealing Day:</b>	First business day of each month

May be included in Personal Portfolio Bonds, Wraps, SIPPs and QROPS. Please check with your provider.

### USD Arbitrage Performance Graph

Source: 27th February Bloomberg



### Managed by

Managing Partners Investment Management Limited  
PO Box 2510, Kensington House  
69 Dr. Roy's Drive, Grand Cayman  
KY1-1104, Cayman Islands

### Correspondence Address

Managing Partners Capital Limited  
Drayton House, Drayton Lane  
Chichester  
West Sussex, PO20 2EW  
United Kingdom

### Investment Adviser

Equity International  
Asset Management SA  
Rue Ferdinand-Hodler 17  
CH-1207 Geneva  
Switzerland

**MPG**   
Member of AIMA  
info@mpinvestmentmanagement.com | mpinvestmentmanagement.com